



# Take part in the Kentucky 4-H Get Outside Challenge this summer!

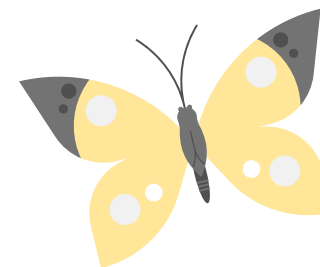
1. Simply track the number of hours you spend outside during June and July using the 4-H Get Outside Tally Sheet.
2. During the first week of August (August 1-7) calculate the total number of hours you spent outside during June and July.
3. Enter those hours online at <https://tinyurl.com/4hgetoutside> by August 7. Participants that have at least 60 hours will be entered into a grand prize drawing. For every 5 additional hours spent outside, the participant's name will be entered into the grand prize drawing again.

*To participate, youth must reside in Kentucky and be between the ages of 9-18.  
Remember to always ask your parent or guardian's permission before going outside!*

## Here are a few fun ideas to do outside! How many can you do?

- Participate in the KY 4-H BioBlitz
- Walk your dog or a neighbor's dog
- Play kickball
- Take pictures of insects to create a digital 4-H insect collection
- Ride your bike
- Stargaze
- Read
- Have a picnic

- Paint, color, or draw
- Make s'mores
- Go fishing
- Listen for birds
- Watch the sunset
- Collect leaves to create a 4-H leaf collection
- Play hide and seek
- Watch the sunrise
- Make a scarecrow



Visit these websites for more information about 4-H Insect Collections: <https://tinyurl.com/4Hdigitalinsect>,  
4-H Leaf Collections: <https://tinyurl.com/4hleafcollection>, and the Kentucky 4-H BioBlitz: <https://tinyurl.com/ky4hbioblitz>.



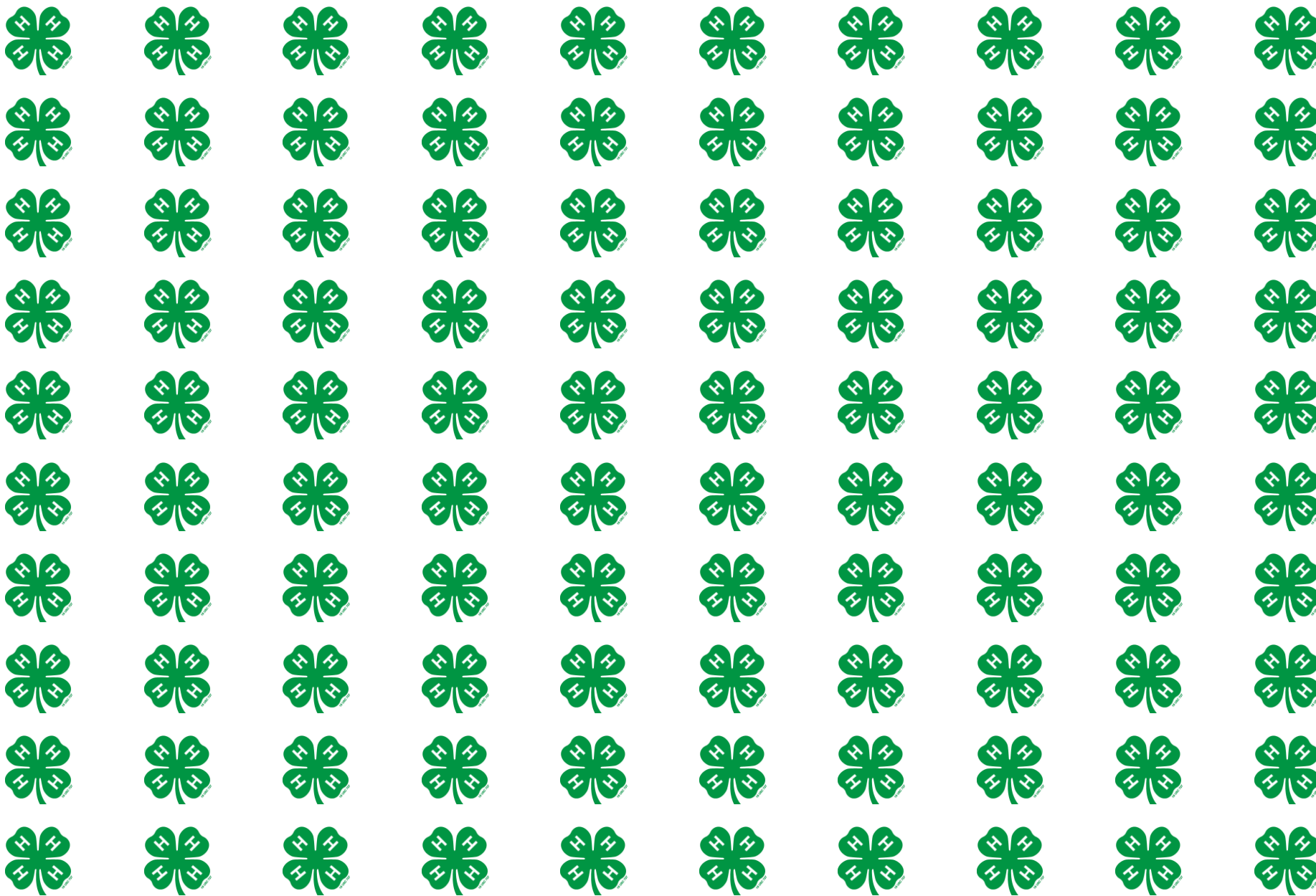
**Cooperative Extension Service**  
Agriculture and Natural Resources  
Family and Consumer Sciences  
4-H Youth Development  
Community and Economic Development

Educational programs of Kentucky Cooperative Extension serve all people regardless of economic or social status and will not discriminate on the basis of race, color, ethnic origin, national origin, creed, religion, political belief, sex, sexual orientation, gender identity, gender expression, pregnancy, marital status, genetic information, age, veteran status, or physical or mental disability. University of Kentucky, Kentucky State University, U.S. Department of Agriculture, and Kentucky Counties, Cooperating.  
LEXINGTON, KY 40546



Disabilities  
accommodated  
with prior notification.

*Kentucky 4-H Get Outside Challenge TALLY SHEET -- Check off one clover for each hour you spend outside!*



*Print off as many pages as needed!*